

## Recent PCM Additions & Updates

Ver. 7.0.1620

The following changes are for PCM versions 7.0.1616 to 7.0.1620.

To ensure that all of the changes apply to you, make sure that your server has been updated to the latest version.

### Contents

Procedure Pane Search Options .....	1
<i>Fix</i> .....	1
California Parkinson's Disease Registry .....	3
<i>New Feature</i> .....	3
Daily Appointment List.....	3
<i>Fix</i> .....	3

### Procedure Pane Search Options

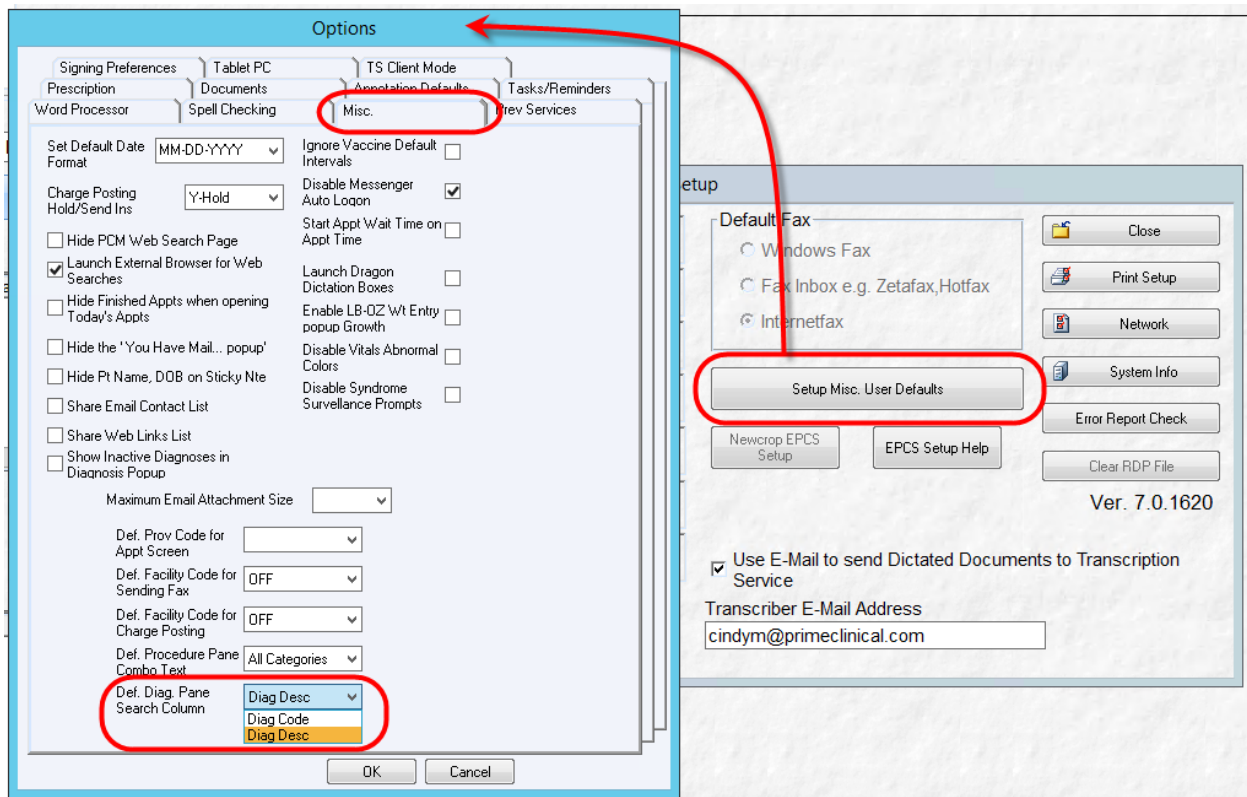
#### *Fix*

The *Procedures* pane drop-down now has one key search capability like the *Diagnoses/Past Hx* pane drop-down. The search method (by code or description) is set in Misc User Options.

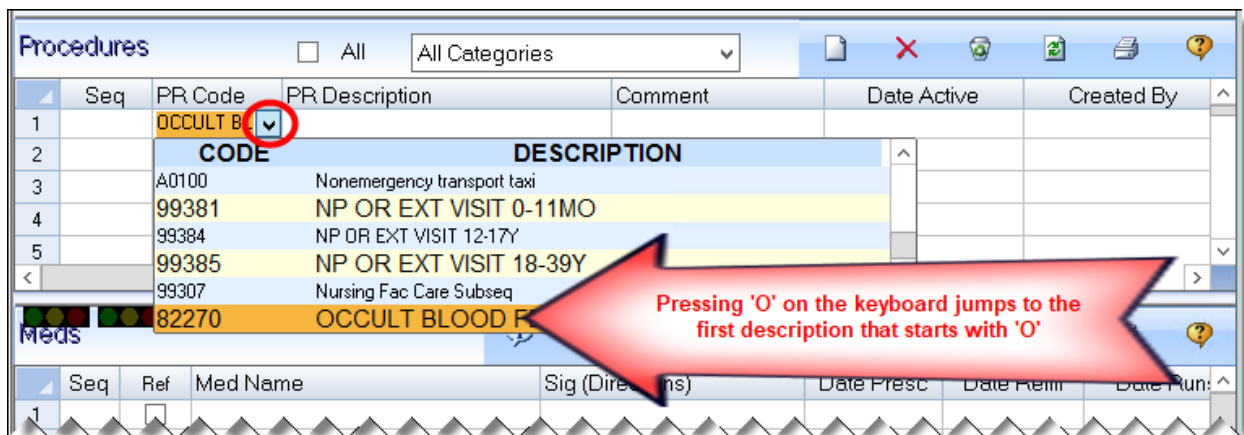
- Set the search method on the *Misc* tab of the *Options* window by selecting {Diag Code} or {Diag Desc} from the <Def Diag Pane Search Column> drop-down. NOTE: The search method selected applies to both the *Procedures* and the *Diagnoses/Past Hx panes*.

# Recent PCM Additions & Updates

Ver. 7.0.1620



- For example, if the search method is set to description: In the *Procedures* pane, click the drop-down in the next available blank line under the <PR Code> column and press a letter on the keyboard to jump to the first description that starts with that letter.



## Recent PCM Additions & Updates

Ver. 7.0.1620

### California Parkinson's Disease Registry

#### *New Feature*

**CALIFORNIA CLIENTS ONLY:** PCM will automatically submit a full CDA to the California Parkinson's Disease Registry (CPDR) under the following circumstances: If the G20 or G90.3 diagnoses exist in a chart and the data has not been previously sent to the registry, the data is submitted upon checkout in PCM.

**PROMOTING INTEROPERABILITY:** Data submission to this registry can be used to meet the Public Health Registry Reporting measure of the Public Health & Clinical Data Exchange objective.

### Daily Appointment List

#### *Fix*

If there is a default facility set in the PCM clinic setup screen and there is a provider who is not mapped to the default facility (mapped to another facility instead), the provider will now show in the Provider drop-down.